



Did you know that 90% of chronic disease is linked to environmental exposures?

The Human Genome Project revolutionized our understanding of health, but only tells part of the story.



The rest of the story—**how our environment shapes our health**—remains largely unexplored. Until now.

We're launching an unprecedented scientific endeavour to map the combined impact of all environmental factors that affect human health from **conception to death**.

This initiative matches the **Human Genome Project** in scope and ambition, promising to revolutionize medicine, public health, and environmental protection.

Why now?

The convergence of advanced technologies makes this the perfect moment for a **movement**:

Artificial Intelligence:

Unprecedented ability to analyze complex environmental data

Advanced Sensors:

Real-time monitoring of complex environmental factors

Exposomics:

Deepened understanding of how exposures affect our biology

Big Data Analytics:

Capacity to process and interpret massive datasets



GLOBAL EXPOSOME FORUM

April 27-29, 2026, Sitges (Barcelona), Spain

An preliminary meeting will be held December 1st in Pretoria, South Africa and a complimentary meeting targeting journalists on the 2nd.



This isn't a traditional conference—it's a strategic forum to launch a **global movement**.

Over three intensive days, participants will:

Shape the future direction of the Human Exposome Project, presenting a strategic roadmap

Design frameworks and identify benchmarks of success for effective implementation

Form crucial partnerships across academia, industry, and government to scale impact

Establish governance structures that ensure low and middle-income nations' participation

Project Impacts:



01

Transform Medicine

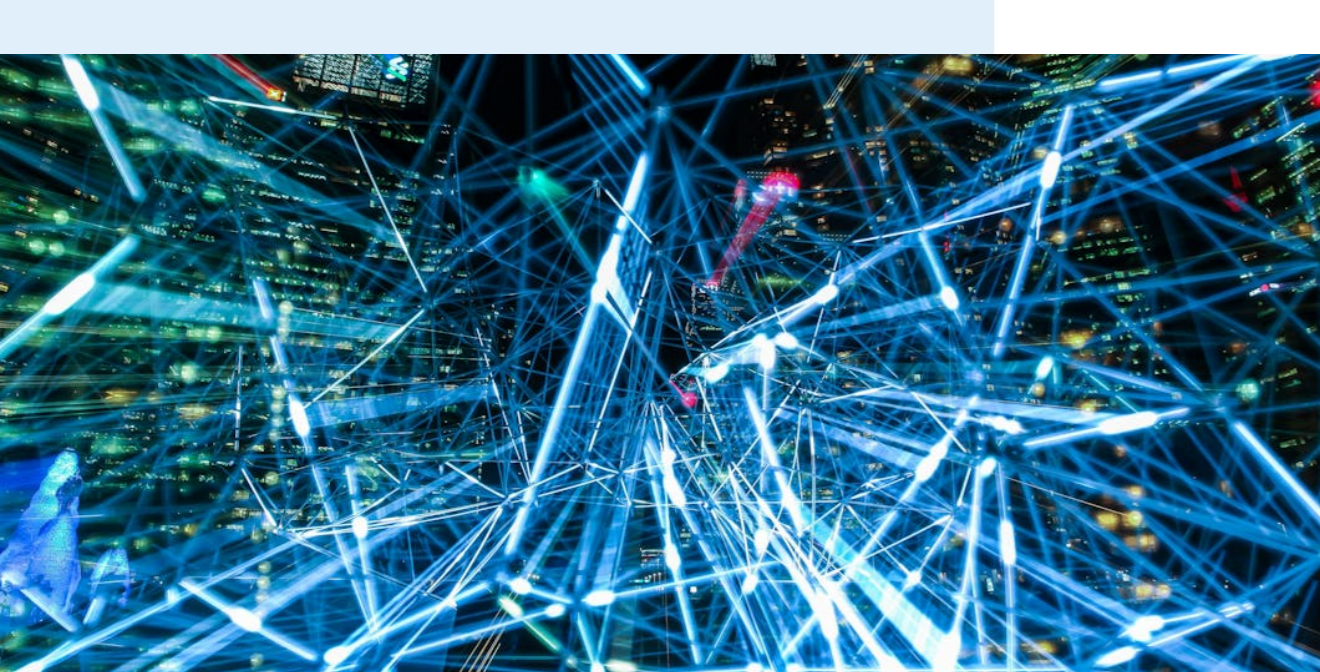
- Predict disease risk based on exposure patterns
- Identify environmental triggers for chronic conditions
- Enable early intervention in disease progression



02

Revolutionize Public Health

- Target interventions to communities most at risk
- Reduce healthcare costs through prevention
- Create evidence-based environmental policies



03

Accelerate Innovation

- Design safer chemicals and materials
- Enable precise testing of environmental impacts
- Drive advances in sensor technology

Register to join this landmark event at globalexposomesummit.org.

SCAN ME

